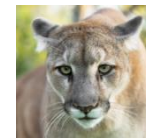




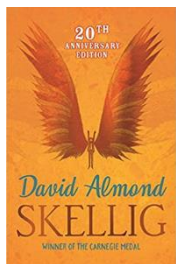
Pendragon Community Primary School



Year 6 – Miss Jupe, Mrs Groves and Miss Scott

National Curriculum

As **Readers** we will be studying the text 'Skelling' by David Almond. We will be reading a variety of fictions, non-fiction and poetry and focusing on answering SATs style questions.



As **Mathematicians** we will be learning about fractions. We will learn how to order and compare fractions and add and subtract them. We will then be learning about fraction, decimal and percentage equivalence. As well as this we will be looking at shape, space and measure.

Where will your next adventure take you?



As **Designers** we will be considering seasonal produce and the importance of utilising locally sourced food. We will be researching, designing and making our own seasonal soup.

As **Historians** we will be learning all about the Maya civilisation and investigating why they came to such an abrupt end.



Why did the Maya civilization come to such an abrupt end?

As **Musicians** we will be learning Christmas songs to sing in the community.

In **PE** we will develop skills in hockey and dance.

In **Computing** we will be learning about coding. During the topic we will learn how to code our own game and debug any problems we may encounter.

In **PSHE** we will be thinking and talking about new friendships and falling out. We will then be learning about anti-bullying and what we can do to prevent it.

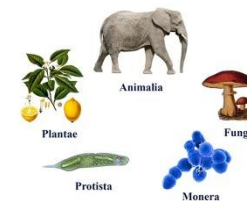
As **Writers** we will be learning how to write a balanced argument. We will be exploring the question 'Should social media have age restrictions?'. We will also be writing our own finding tales based on our class reader 'Skellig'. The children will explore character and dialogue and how they can use this in their own writing.

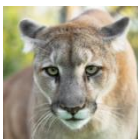
In **French** we will be revising months and learning vocabulary for the seasons and the weather - building up to writing sentences to describe the weather in the different seasons and months.

In **Geography** we will study world maps and globes in more detail, identifying different countries, continents, hemispheres and time zones.

In **RE** we will consider what key beliefs influence people's faith and how do people of faith live out their lives?

As **Scientists** we will be learning about living things, focusing on animal classification. We will discuss differences between vertebrates and invertebrates. As well as this we will learn about the three kingdoms – animals, plants and fungi.





Pendragon Community Primary School



Year 6 – Miss Jupe, Mrs Groves and Miss Scott

Supporting Learning at Home

☺ **Maths**

Work will be provided to practise what has been learned in class as an activity in the homework book and on **Mathletics**: www.mathletics.co.uk

☺ **Spelling**

Children will be provided with a personalised spelling list. Each week they should practise and learn 10 of the words from their spelling lists.

☺ **Reading book**

Ideally read **daily** for at least 15-20mins.

☺ **Bug club**: www.activelearnprimary.co.uk

☺ **KIRFs**: This half term's KIRFs are to learn times table facts up to 12×12 and the related division facts (e.g. if 12×3 is 36, $36 \div 12 = 3$). Next half term's is to know the decimal complements of 1 (e.g. $0.4 + 0.6 = 1$, or $0.12 + 0.88 = 1$)

Hilltop

A reminder for those going to Hilltop that the dates are Monday 5th - Friday 9th December 2022. Further information will be given out in October.

SATs tests 2023

This year these tests take place during the week of 8th May 2023. Please try to avoid taking time off during this week.

Contact

For any queries or enquiries, please contact your child's teacher via the school office using the email address below:

Office@pendragon.cambs.sch.uk

The office will forward your message on to the class teacher. If you have an urgent message, please continue to call the office.

Mountain Lions:
Mrs Groves (Mon, Tues)
Miss Scott (Wed, Thurs, Fri)

Snow Leopards:
Miss Jupe (Mon, Tues, Wed, Thurs, Fri)

Entry and exit procedures

Year 6 will enter and exit school via the green gate which can be accessed from the public footpath at the bottom of the field.

Children can come into school from 8.40am and the gates will close at 8.55am. School ends at 3.15pm.

PE Lessons

Snow Leopards PE days

Outdoor PE: Friday

Indoor PE: Wednesday

Mountain Lions PE days

Outdoor PE: Thursday

Indoor PE: Tuesday

All uniform and kit must be named or it is impossible to reunite it with your child if it gets muddled up! If your child has long hair, please ensure they have a hair band, as long hair must be tied back for PE. It is expected that all children can remove watches/earrings for PE. If your child is unable to remove their own stud earrings these should be removed at home on PE days or micropore tape provided so they can cover them.

Thank you for your support with this.

The Haven and wellies

Each class will have a weekly time slot to use the Haven. Wellies should be brought into and kept in school so that this space can be used throughout the year.